

## TECHNICAL SPECIFICATION

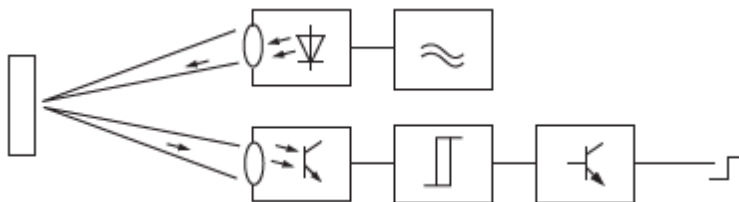
### Photoelectrical sensor

#### Description:

Photoelectrical sensors of the Gxx series are all-purpose switches used in machine systems and equipment for no contact surveillance of motion of elements. They are based on the photoelectric principle of operation – inside the sensor there is a photo signal emitter and receiver of the returned signal. There are three types of sensors: diffuse sensors, reflector sensors and emitter-receiver sensors. These types of sensors differ in the way of returning the signal. They allow for gearing distance adjustment. They are developed on the base of PNP and NPN transition. They have small dimensions and feature a metal cylindrical shell resistant to vibrations and a plastic lid which is oil and water resistant.

#### Technical data:

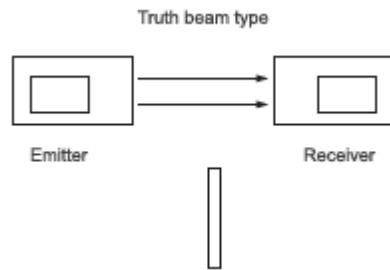
- Insulating resistance:  $\geq 50 \text{ M } \Omega$
- Gearing distance: from 2 mm to 7 mm
- Precision of repetition: 0.01
- Ambient temperature:  $-25^{\circ}\text{C}$  to  $+70^{\circ}\text{C}$
- Gearing speed: 5mm/s
- Rated voltage: 6~36VDC; 90~230VAC
- IP code: IP 67



## Variants and dimensions:



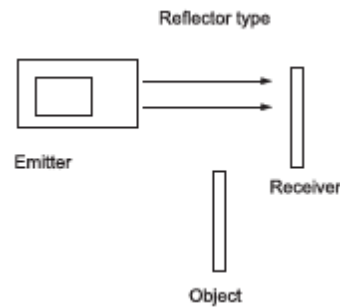
EL-G12



Type	Start distance	Power supply voltage	Type of transition	Type of contact	Type of sensor	Packing / Box (pcs)	Catalogue number
EL-G12-3A07NA	70mm	15~30VDC	NPN	Ø12; l=50	Diffuse	1 / 100	46G12A071
EL-G12-3A07PA	70mm	15~30VDC	PNP	Ø12; l=50	Diffuse	1 / 100	46G12A072
EL-G12-3B1NA	1m	15~30VDC	NPN	Ø12; l=50	Reflector	1 / 100	46G123B11
EL-G12-3B1PA	1m	15~30VDC	PNP	Ø12; l=50	Reflector	1 / 100	46G123B12
EL-G12-3C3NA	3m	15~30VDC	NPN	Ø12; l=50	Truth beam	1 / 100	46G123C11
EL-G12-3C3PA	3m	15~30VDC	PNP	Ø12; l=50	Truth beam	1 / 100	46G123C12



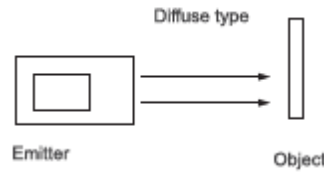
EL-G18



Type	Start distance	Power supply voltage	Type of transition	Type of contact	Type of sensor	Packing / Box (pcs)	Catalogue number
EL-G18-3A10NA	100 mm	15~30VDC	NPN	Ø18; l=70	Diffuse	1 / 100	46G18A101
EL-G18-3A10PA	100 mm	15~30VDC	PNP	Ø18; l=70	Diffuse	1 / 100	46G18A102
EL-G18-3B2NA	2 m	15~30VDC	NPN	Ø18; l=70	Reflector	1 / 100	46G183B11
EL-G18-3B2PA	2 m	15~30VDC	PNP	Ø18; l=70	Reflector	1 / 100	46G183B12
EL-G18-3C5NA	5 m	15~30VDC	NPN	Ø18; l=70	Truth beam	1 / 100	46G185C11
EL-G18-3C5PA	5 m	15~30VDC	PNP	Ø18; l=70	Truth beam	1 / 100	46G185C12



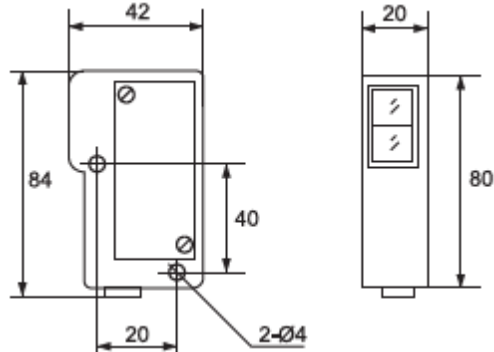
EL-G30



Type	Start distance	Power supply voltage	Type of transition	Type of contact	Type of sensor	Packing / Box (pcs)	Catalogue number
EL-G30-3A70NA	500 mm	15~30VDC	NPN	Ø22; l=70	Diffuse	1 / 100	46G30A101
EL-G30-3A70PA	500 mm	15~30VDC	PNP	Ø22; l=70	Diffuse	1 / 100	46G30A102
EL-G30-3B3NA	3 m	15~30VDC	NPN	Ø22; l=70	Reflector	1 / 100	46G303B11
EL-G30-3B3PA	3 m	15~30VDC	PNP	Ø22; l=70	Reflector	1 / 100	46G303B12
EL-G30-3C101NA	10 m	15~30VDC	NPN	Ø22; l=70	Truth beam	1 / 52	46G305C11
EL-G30-3C101PA	10 m	15~30VDC	PNP	Ø22; l=70	Truth beam	1 / 52	46G305C12



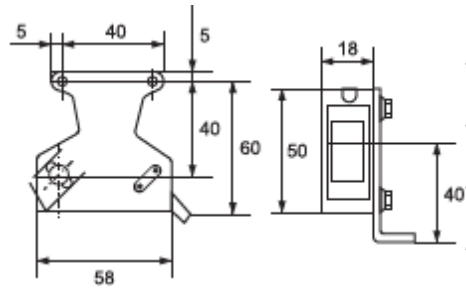
EL-G35



Type	Start distance	Power supply voltage	Type of transition	Type of contact	Type of sensor	Packing / Box (pcs)	Catalogue number
EL-G35-3A50NA	500 mm	15~30VDC	NPN	NO	Diffuse	1 / 100	46G35A101
EL-G35-3A50PA	500 mm	15~30VDC	PNP	NO	Diffuse	1 / 100	46G35A102
EL-G35-3B3NA	3 m	15~30VDC	NPN	NO	Reflector	1 / 100	46G353B11
EL-G35-3B3PA	3 m	15~30VDC	PNP	NO	Reflector	1 / 100	46G353B12
EL-G35-3C5NA	5 m	15~30VDC	NPN	NO	Truth beam	1 / 50	46G355C11
EL-G35-3C5PA	5 m	15~30VDC	PNP	NO	Truth beam	1 / 50	46G355C12



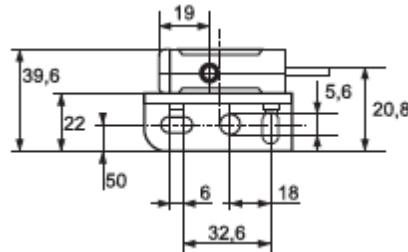
EL-G50



Type	Start distance	Power supply voltage	Type of transition	Type of contact	Type of sensor	Packing / Box (pcs)	Catalogue number
EL-G50-3A30NA	500 mm	15~30VDC	NPN	NO	Diffuse	1 / 100	46G50A101
EL-G50-3A30PA	500 mm	15~30VDC	PNP	NO	Diffuse	1 / 100	46G50A102
EL-G50-3B4NA	3 m	15~30VDC	NPN	NO	Reflector	1 / 100	46G503B11
EL-G50-3B4PA	3 m	15~30VDC	PNP	NO	Reflector	1 / 100	46G503B12
EL-G50-3C5NA	5 m	15~30VDC	NPN	NO	Truth beam	1 / 50	46G505C11
EL-G50-3C5PA	5 m	15~30VDC	PNP	NO	Truth beam	1 / 50	46G505C12



EL-BZJ



Type	Start distance	Power supply voltage	Type of transition	Type of contact	Type of sensor	Packing / Box (pcs)	Catalogue number
EL-BZJ-211	10mm	15~30VDC	Reflector	NO	Colour detection	1 / 50	46BZJ211
EL-BZJ-311	9mm	15~30VDC	Reflector	NO	Colour detection	1 / 50	46BZJ311
EL-BZJ-411	9mm	15~30VDC	Reflector	NO	Colour detection	1 / 50	46BZJ411

**Standards:** EN 60947-5-2:2007/A1:2012

EN 60947-5-3:1999/A1:2005

